



PREFLIGHT

- Oxygen. Tested, 100%
- Navigation transfer
and display switches NORMAL, AUTO
- Window heat ON
- Pressurization mode
selector AUTO
- Flight instruments Heading ____, Altimeter ____
- Parking brake Set
- Engine start levers CUTOFF

BEFORE START

- Flight deck door Closed and locked
- Fuel __ LBS/KGS, Pumps ON
- Passenger signs ____
- Windows Locked
- MCP V2 ____, HEADING ____, ALTITUDE ____
- Takeoff speeds V1 ____, VR ____, V2 ____
- CDU preflight. Completed
- Rudder and aileron trim Free and 0
- Taxi and takeoff briefing Completed
- Anti collision light. ON



BEFORE TAXI

- Generators On
- Probe heat ON
- Anti-ice
- Isolation valve AUTO
- [Without automatic ignition]**
- Engine start switches CONT
- Recall Checked
- Autobrake RTO
- Engine start levers IDLE detent
- Flight controls Checked
- Ground equipment Clear

BEFORE TAKEOFF

- Flaps , Green light
- Stabilizer trim Units

AFTER TAKEOFF

- Engine bleeds ON
- Packs AUTO
- Landing gear UP and OFF
- Flaps UP, No lights

DESCENT

Pressurization LAND ALT ____
Recall Checked
Autobrake ____
Landing data VREF ____, Minimums ____
Approach briefing Completed

APPROACH

Altimeters ____

LANDING

[Without automatic ignition]

Engine start switches CONT
Speedbrake ARMED
Landing gear Down
Flaps ____, Green light

SHUTDOWN

Fuel pumps OFF
Probe heat OFF
Hydraulic panel Set
Flaps UP
Parking brake ____
Engine start levers CUTOFF
Weather radar Off



SECURE

- IRSs OFF
- Emergency exit lights OFF
- Window heat OFF
- Packs OFF

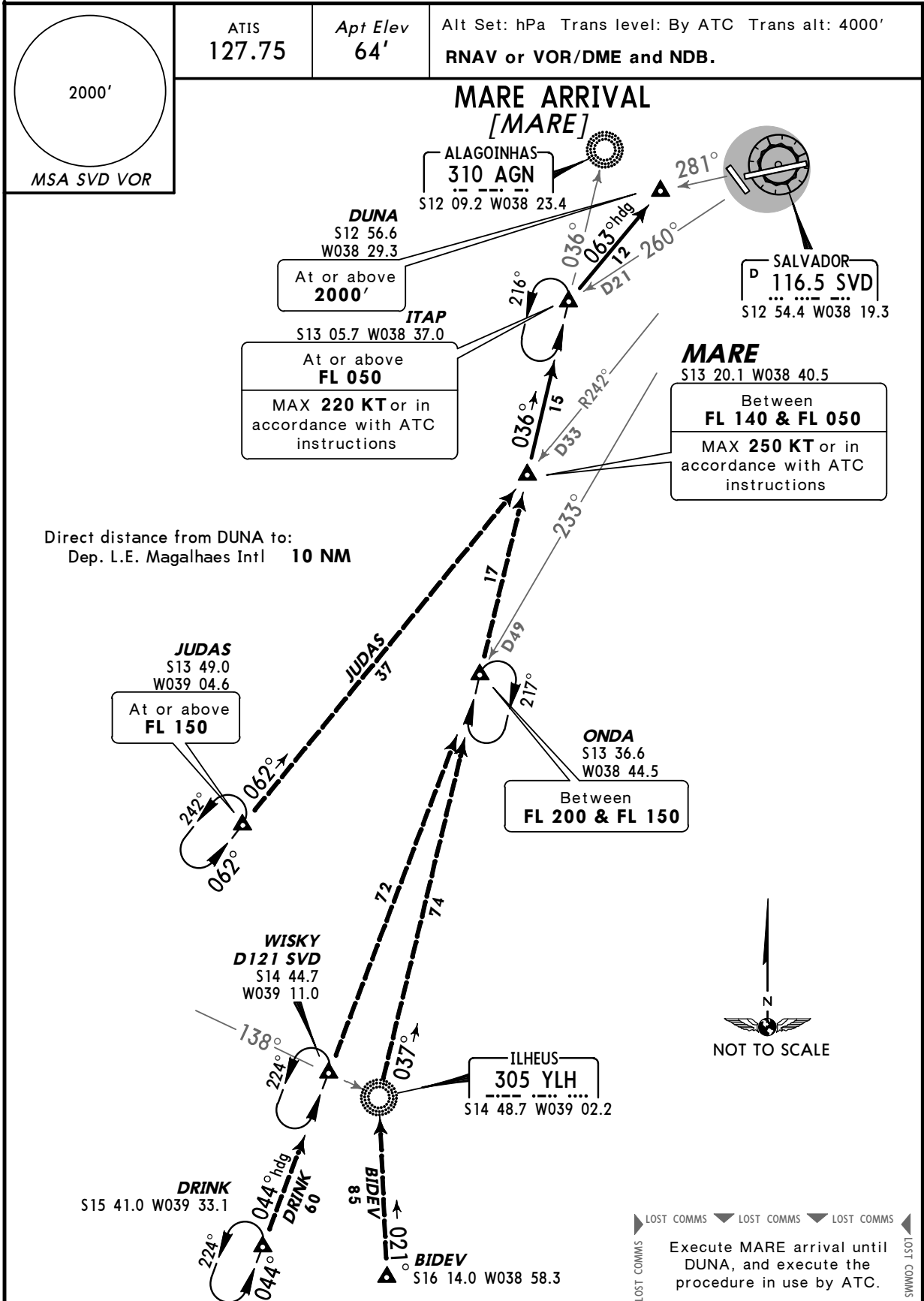
SBSV/SSA
 DEP. L.E. MAGALHAES INTL

JEPPESEN

10-2D 29 APR 11

SALVADOR, BRAZIL

STAR



TRANSITIONS

BIDEV	From BIDEV via 021° bearing to YLH, then YLH 037° bearing to ONDA, then via AGN 037° bearing to MARE.
DRINK	From DRINK via 044° heading to WISKY, then ONDA, then via AGN 037° bearing to MARE.
JUDAS	From JUDAS via SVD R-242 to MARE.

ROUTING

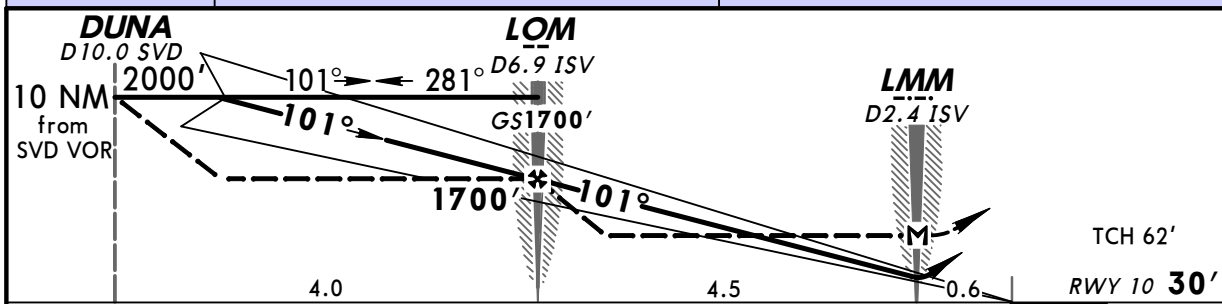
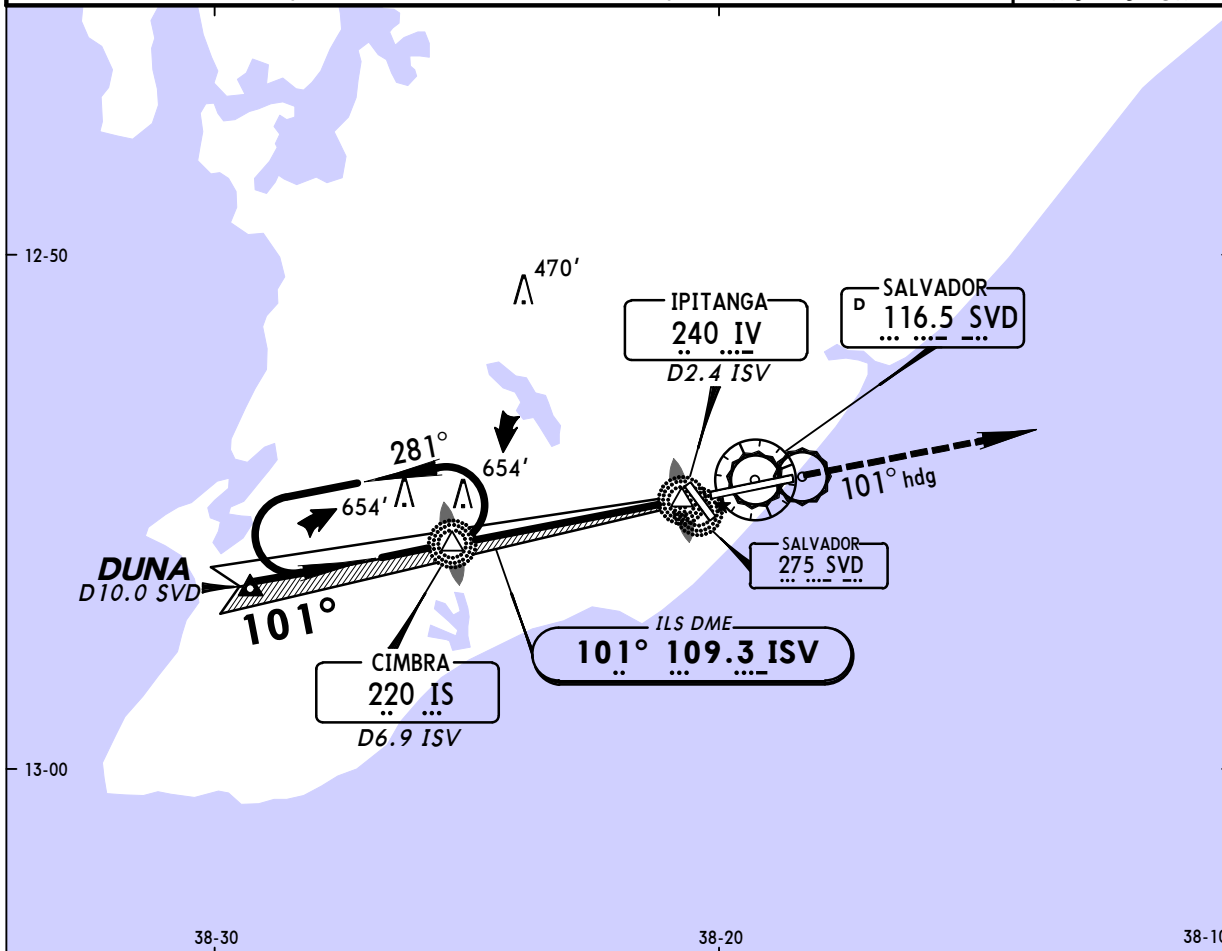
From MARE via AGN 036° bearing to ITAP, then turn RIGHT heading 063° to DUNA, then complete final approach procedure indicated by ATC.

SBSV/SSA
DEP. L. E. MAGALHAES INTL 13 MAY 11 (11-2)

SALVADOR, BRAZIL
ILS X Rwy 10

BRIEFING STRIP™

ATIS 127.75	SALVADOR Control (APP) (R) 119.35 119.8 120.8 129.45			SALVADOR Tower 118.3 118.6		Ground 121.9
LOC ISV 109.3	Final Apch Crs 101°	GS LOM 1700' (1670')	ILS DA(H) 260' (230')	Apt Elev 64' Rwy 10 30'		2000'
MISSED APCH: Climb to 2000' on 101° heading.						MSA IS LOM
Alt Set: hPa	Rwy Elev: 1 hPa	Trans level: By ATC		Trans alt: 4000'		



Gnd speed-Kts	90	110	130	150	170	190	PAPI	2000' on 101° hdg	
GS	2.88°	465	569	672	776	879			982
Rate of descent on final (feet/min)		400	500	700	800	900			1100
MAP at LMM or LOM to MAP	4.5	3:00	2:27	2:04	1:48	1:35			1:25

STRAIGHT-IN LANDING RWY10		CEILING REQUIRED	CIRCLE-TO-LAND	
ILS DA(H) 260' (230')	LOC (GS out) MDA(H) 580' (550')	Max Kts	MDA(H)	CEIL-VIS
CEILING-VISIBILITY		100	660' (596')	600'-1600m
A	200'-1200m	135	660' (596')	600'-1600m
B		180	660' (596')	600'-2400m
C		205	1060' (996')	900'-4000m
D				

PANS OPS 4